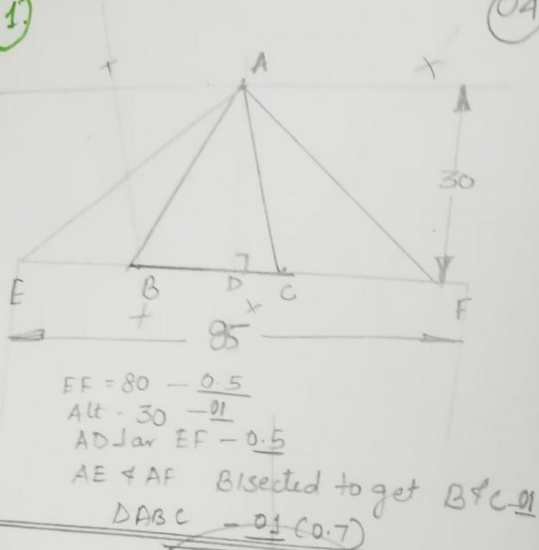


EQ - XI - SECOND TERM EXAM

ANSWER KEY.

17.12.17

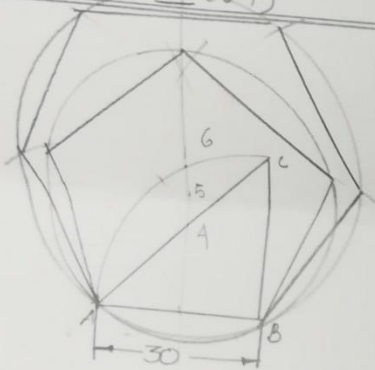
1.



04

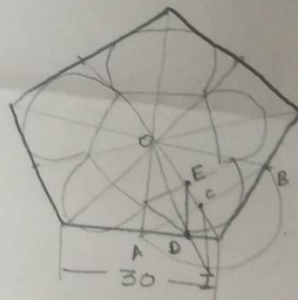
* Semicircle with O_1, O_2 - diameter
 * Draw Arc of rad 45 to get $I_1, I_2 - 0.5$
 * Join O_1, I_1 to get $T_1 - 0.1$
 O_1, I_2 to get $T_2 - 0.1$
 $T_1, T_2 \parallel I_1, O_2 - 0.1$
 $T_3, T_4 \parallel I_2, O_2 - 0.1$
 - circle & Tgt - 0.7 0.1

2.



04

4.



06

3.



06

Join AB to get C - 0.5
 AB diameter semi circle
 $CI \parallel OA - 0.1$
 Join OI - get D - 0.5
 $ED \parallel OA - 0.5$
 E - center
 ED - Radius get semi circle
 Transfer center and draw remaining 4 semicircles - 0.3

05

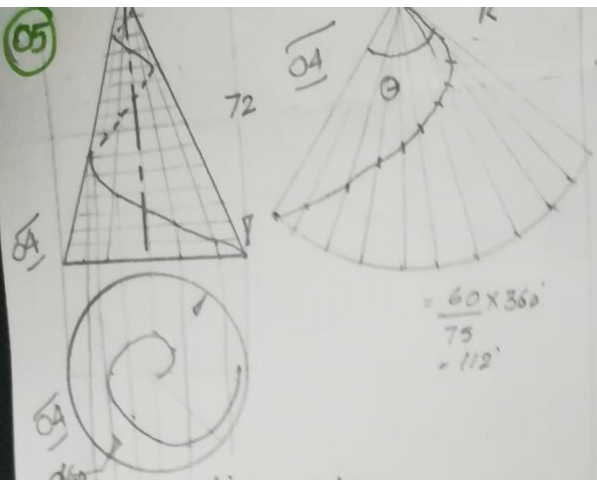
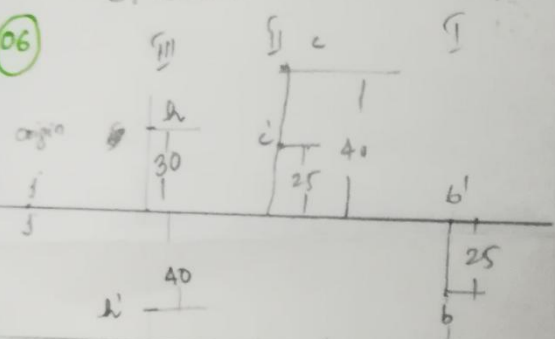


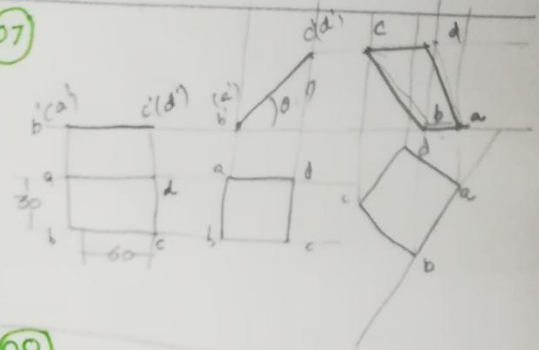
fig is self explanatory.

of each

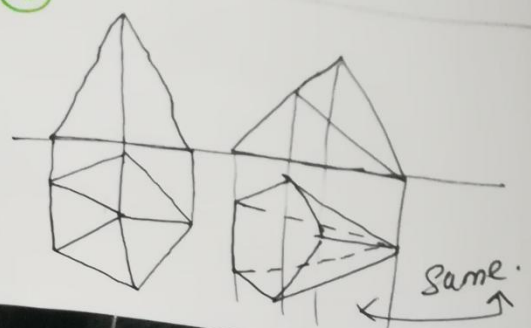
06



07



08



Same.

09

